

AI 360-degree fisheye cameras

Model: WV-S4156 , WV-S4556L , WV-S4556LM
WV-S4176 , WV-S4576L , WV-S4576LM

Ver. 1.00

Panasonic i-PRO Sensing Solutions Co., Ltd.



Edge AI 360-degree fisheye camera that provides video surveillance without any blind spots, and business intelligence.

Key features

360 deg. in all directions
with high-performance fisheye lens

AI processor
for edge AI application

Supporting **Industry standard** protocols

Smart coding
compatible with **H.264 and H.265**

Models: AI-360 degree fisheye cameras

i-PRO

5MP model



Indoor
WV-S4156



Outdoor
WV-S4556L



Outdoor
(M12 connector)
WV-S4556LM

12MP model



Indoor
WV-S4176



Outdoor
WV-S4576L



Outdoor
(M12 connector)
WV-S4576LM

**With high-performance fish eye lens,
the camera provides superior images up
to;**

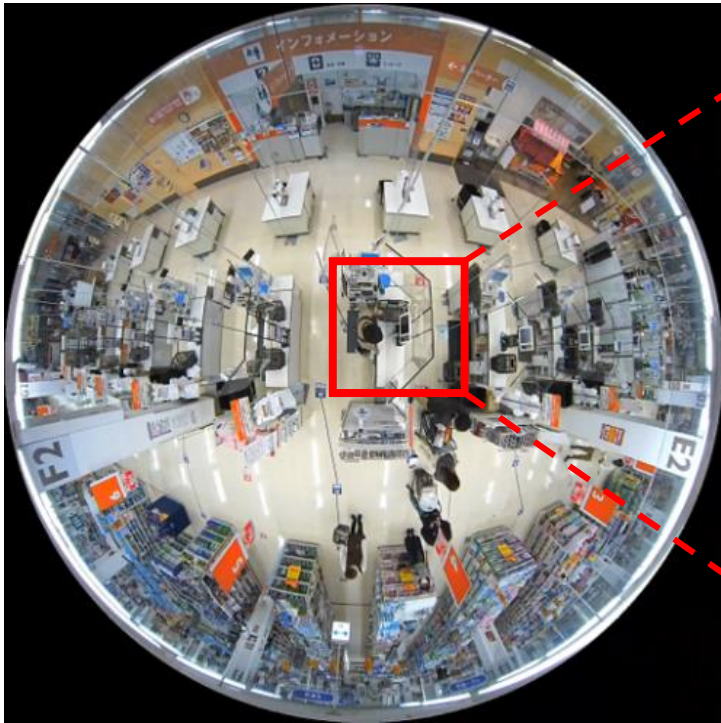
- **2992 x 2992 pixels at 30 fps by 12MP models**
- **2192 x 2192 pixels at 30 fps by 5MP models**



Sample footage: Fisheye mode

PRO

2192x2192 pix (5MP model)



Actual size footage



Outdoor models provides excellent image quality even in no-lighting scene by embedded IR LED

Actual size footage



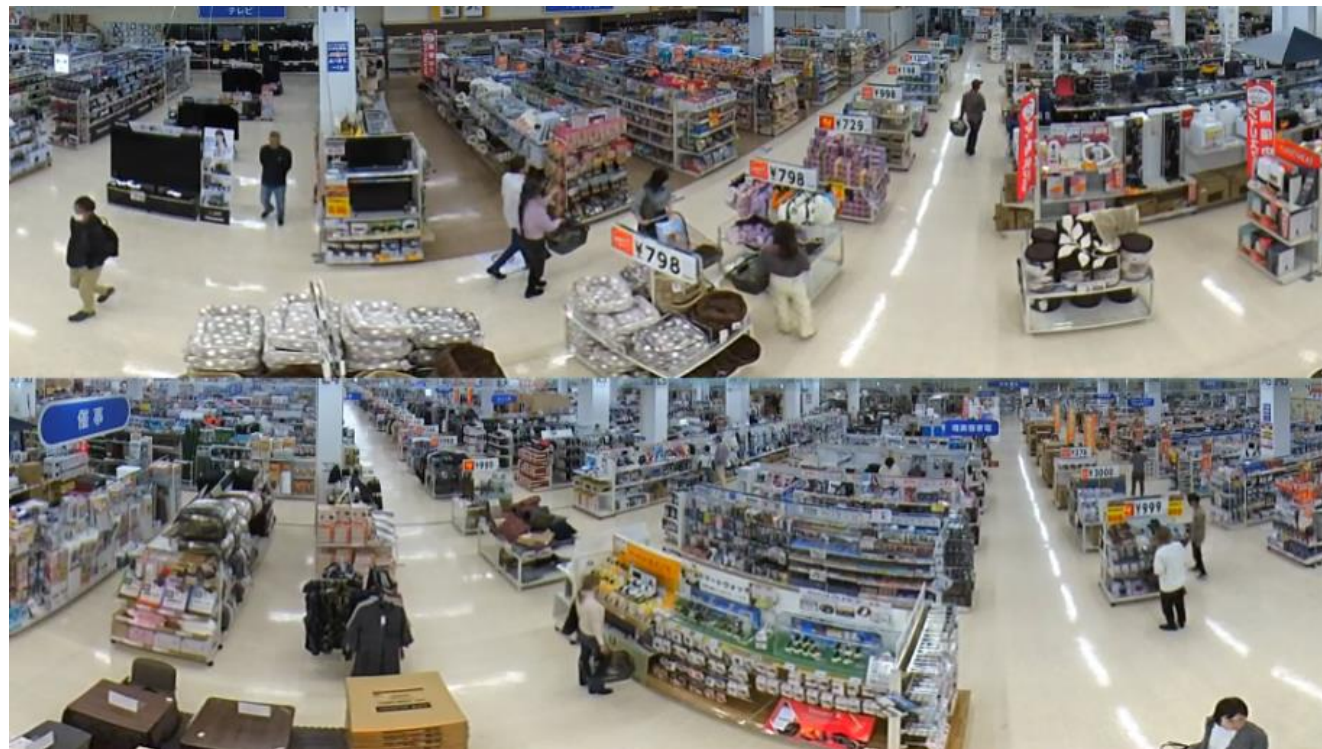
Sample: Fisheye mode in 2192x2192 pixels (5MP model)

Processing de-warping by the camera

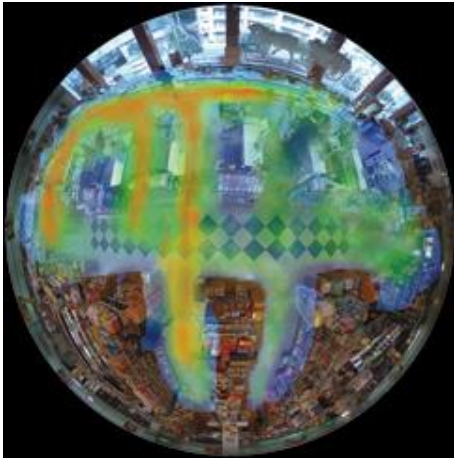
De-warping in below modes

- Double Panorama
- Panorama
- Quad PTZ
- Single PTZ
- Quad streams

Sample: Double Panorama mode in 1920x1080 pix (5MP model)



- **Build-in AI processor enables the camera run applications on the device edge**
- **Pre-installed AI-VMD / AI People Counting, and AI Privacy Guard**
- **Detecting suspicious sound with built-in microphone (indoor models), with optional external microphone (outdoor models)**



Gunshot



Yell



Vehicle horn



Glass break

The camera has pre-installed applications to offer following functions

AI Video Motion Detection

People Counting

Heat map

Occupancy detection

AI Privacy Guard

3 functions in detecting motion objects

1. Intruder detection:

Issuing an alarm when a moving object enters a specified area.

2. Cross Line detection:

Issuing an alarm when an object moving in the specified direction crosses a specified threshold.

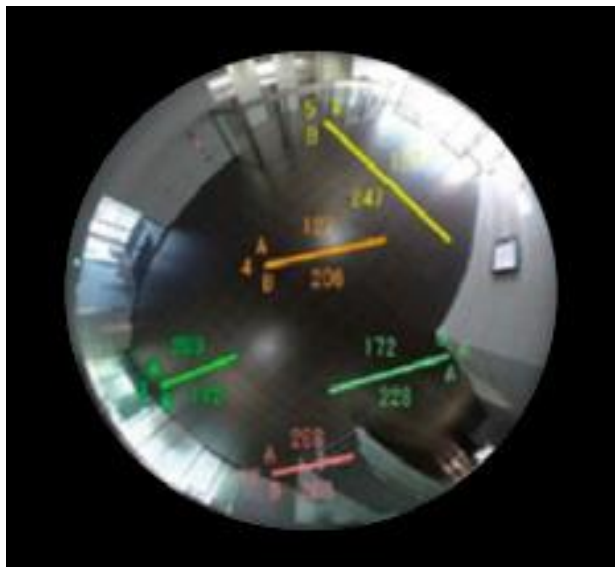
3. Loitering detection:

Issuing an alarm when a moving object enters a specified area and stays there for a specified amount of time.

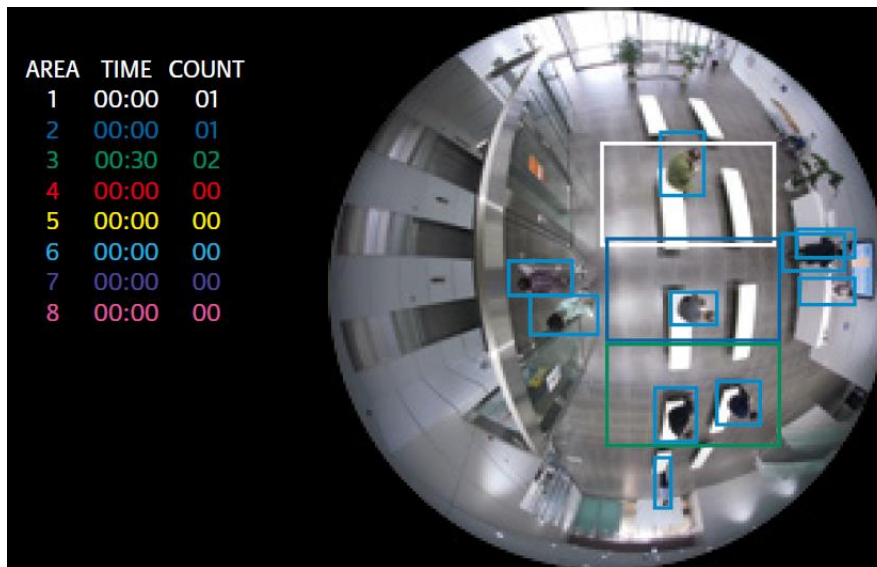


People Counting offers 2 modes to count up number of people.

Cross line counting

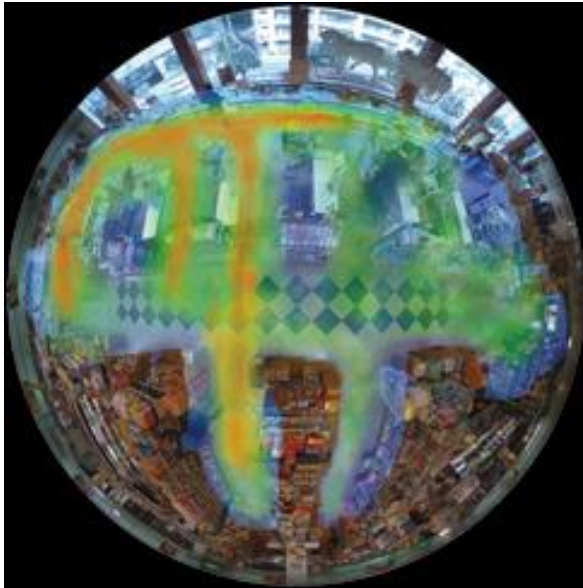


Area counting



Heat map counts up both passing and loitering people.

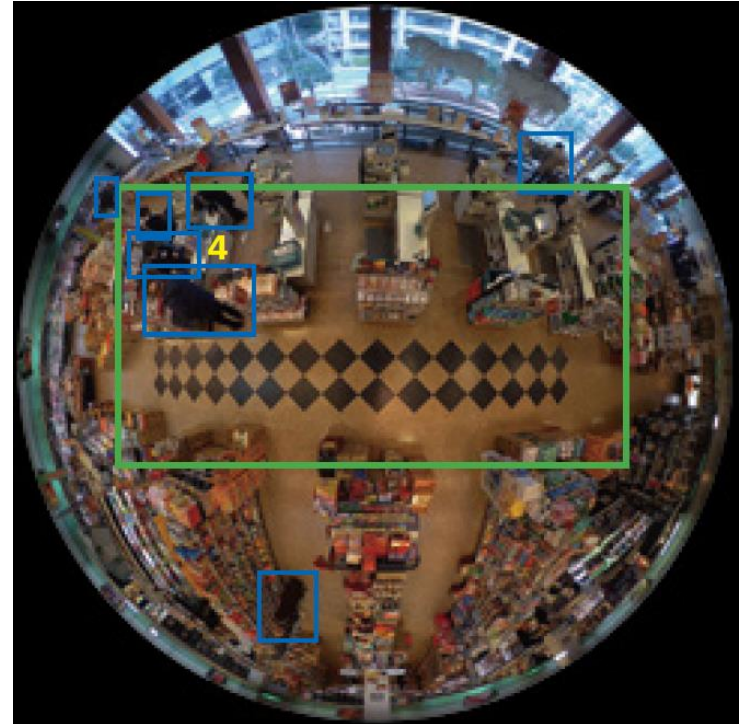
Passing



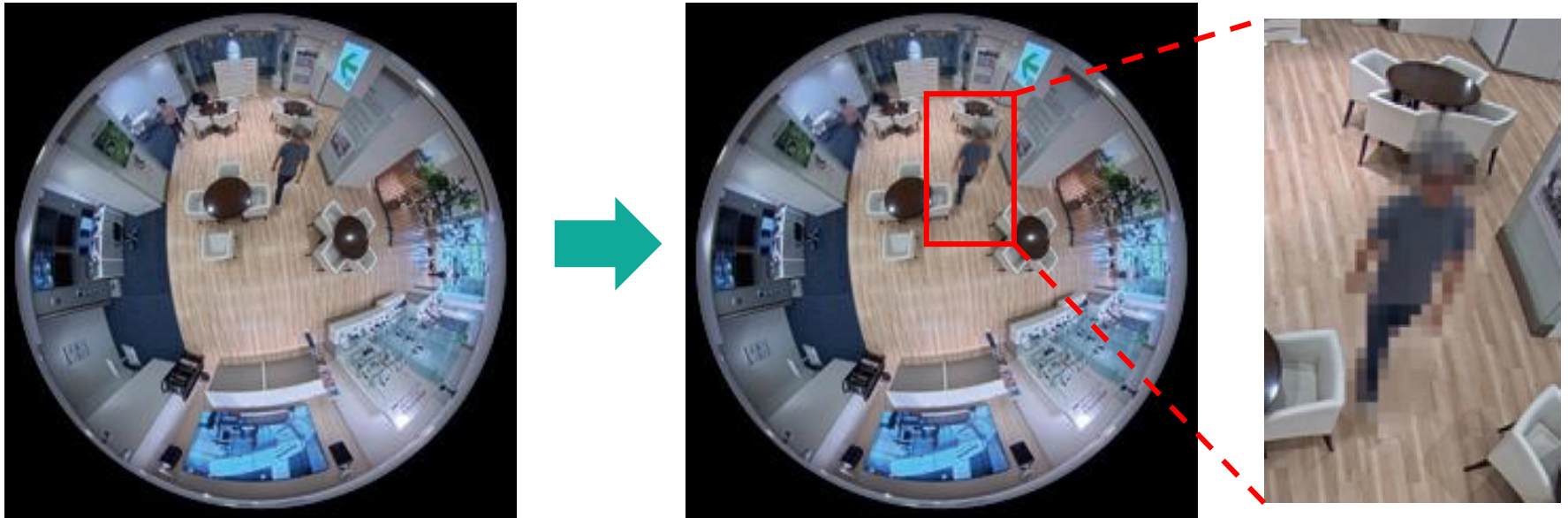
Loitering



Detecting congestions by counting number of people in specific area in specific period of time.



Automatically pixelates the entire face or the figure of a person captured by the camera in real time.



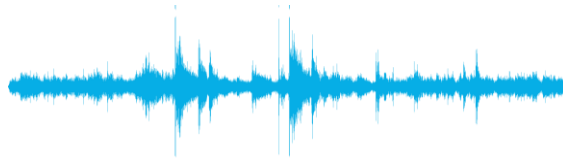
Detecting and classifying suspicious sound as Gunshot, Yell, Vehicle horn, and Glass break.

Example: Gunshot sound



Gunshot sound comes to microphone (cameras built-in or external one)*

* Upon camera models



AI software (in AI network camera) detects and classifies the specific sound among other noises.



Sends alarms to VMS and/or operators etc..

Supporting industry standard protocols such as ONVIF, MQTT*, and H.265/H.264 for integrating/connecting with other devices and systems.

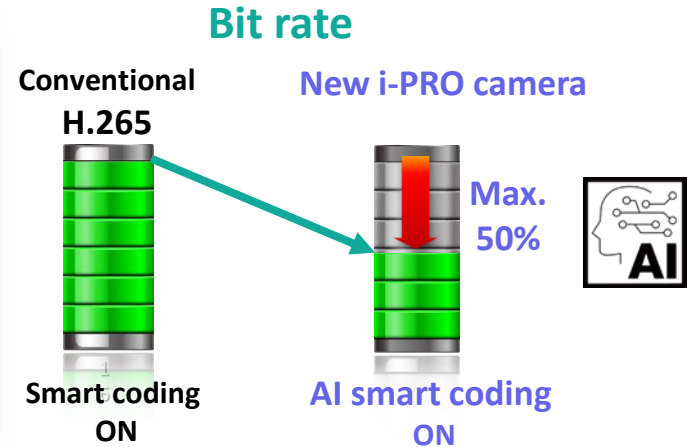


ONVIF is a trademark of ONVIF, Inc.

*May require updating firmware into the latest version.

AI Smart Coding

Optimizing video compression to conserve network bandwidth and server storage capacities.



Reduces bit rate by controlling the image quality of still areas, moving areas, and faces with AI engine.

-PRO